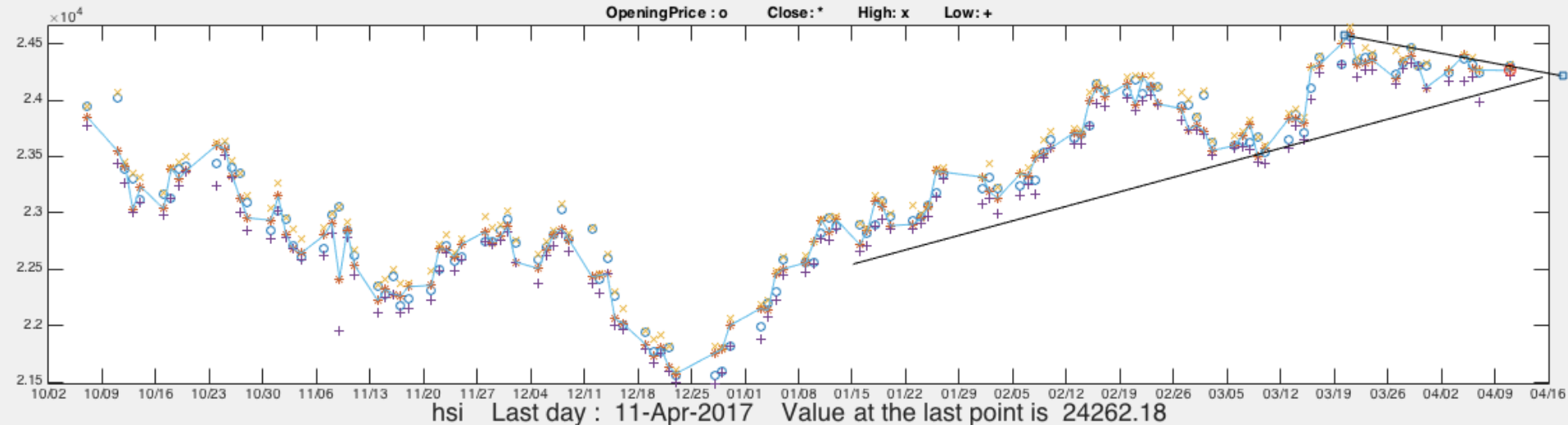


2017.4.11 Hong Kong Index to Rise

HSI from 2016.10.02 to 2017.04.10



The world markets have been flat since about 2017.2.20.

In the past few days, European markets have started to move up again.

Australia is likely to move up today or in the next few days, it should be followed by Hong Kong Index. If it is the case after today's market opening,

I shall long Australia and HSI indexes at current value with a small stakes, using the methods taught in the book Phantom of the Pits .

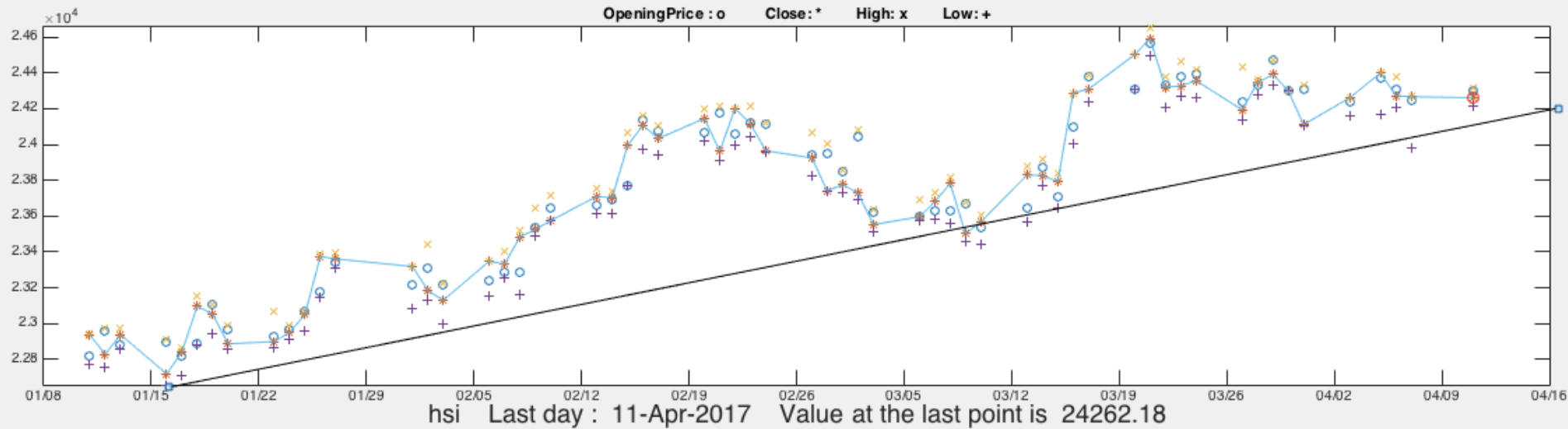
If it does not go up but go down and breaks 24100, it indicates the above assumption is not proven by the market, and then I shall exit. Otherwise, I shall add more stake.

2017.04.11

www.newlonkong.com 1

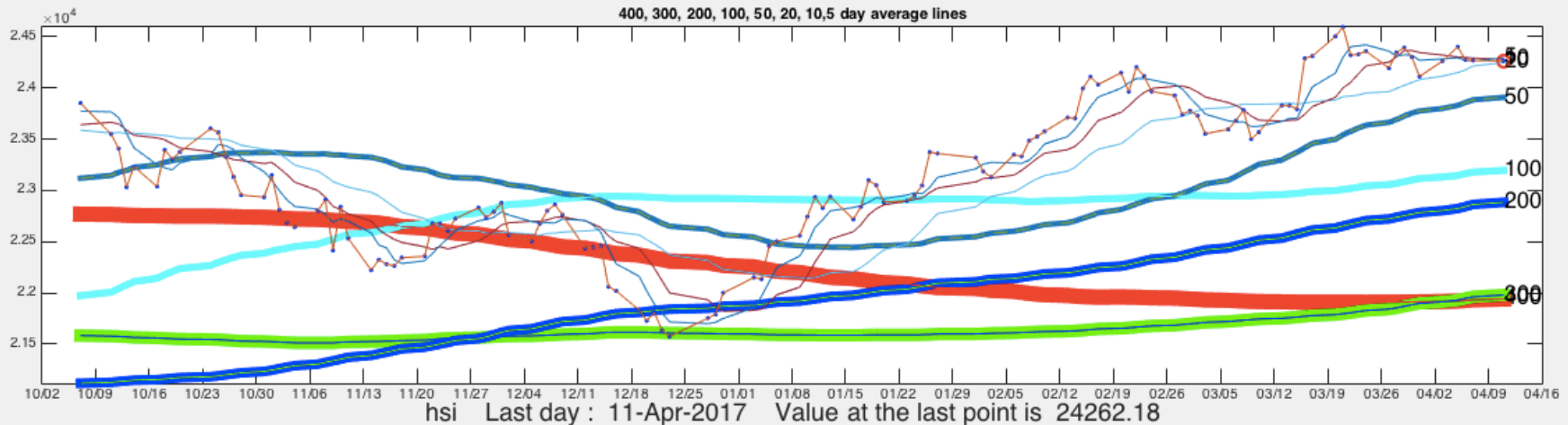
2017.4.11 Hong Kong Index to Rise

HSI from 2017.01.08 to 2017.04.10

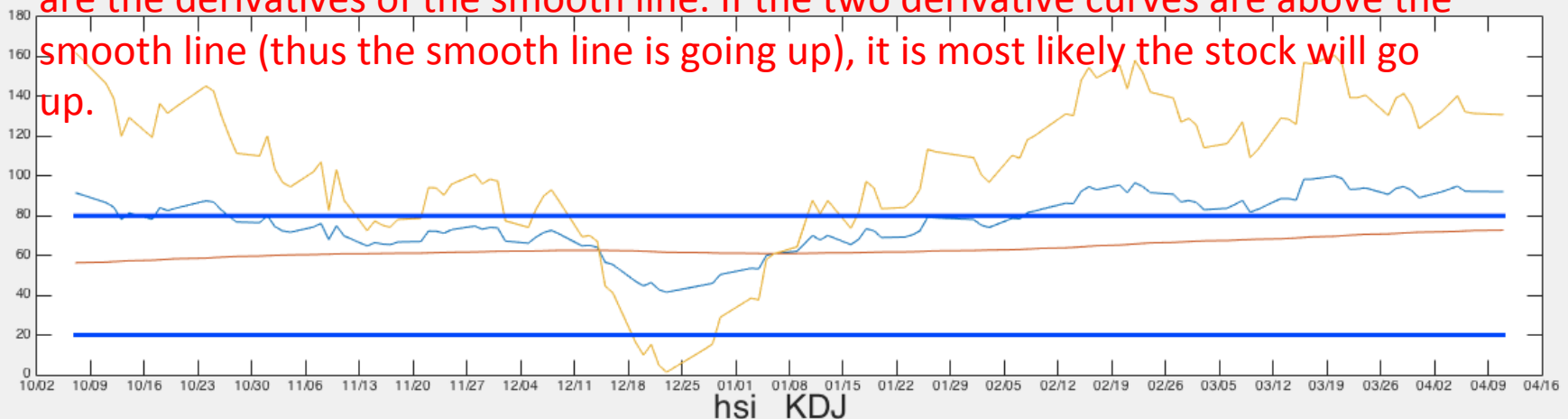


2017.4.11 Hong Kong Index to Rise

HSI from 2016.10.02 to 2017.04.10

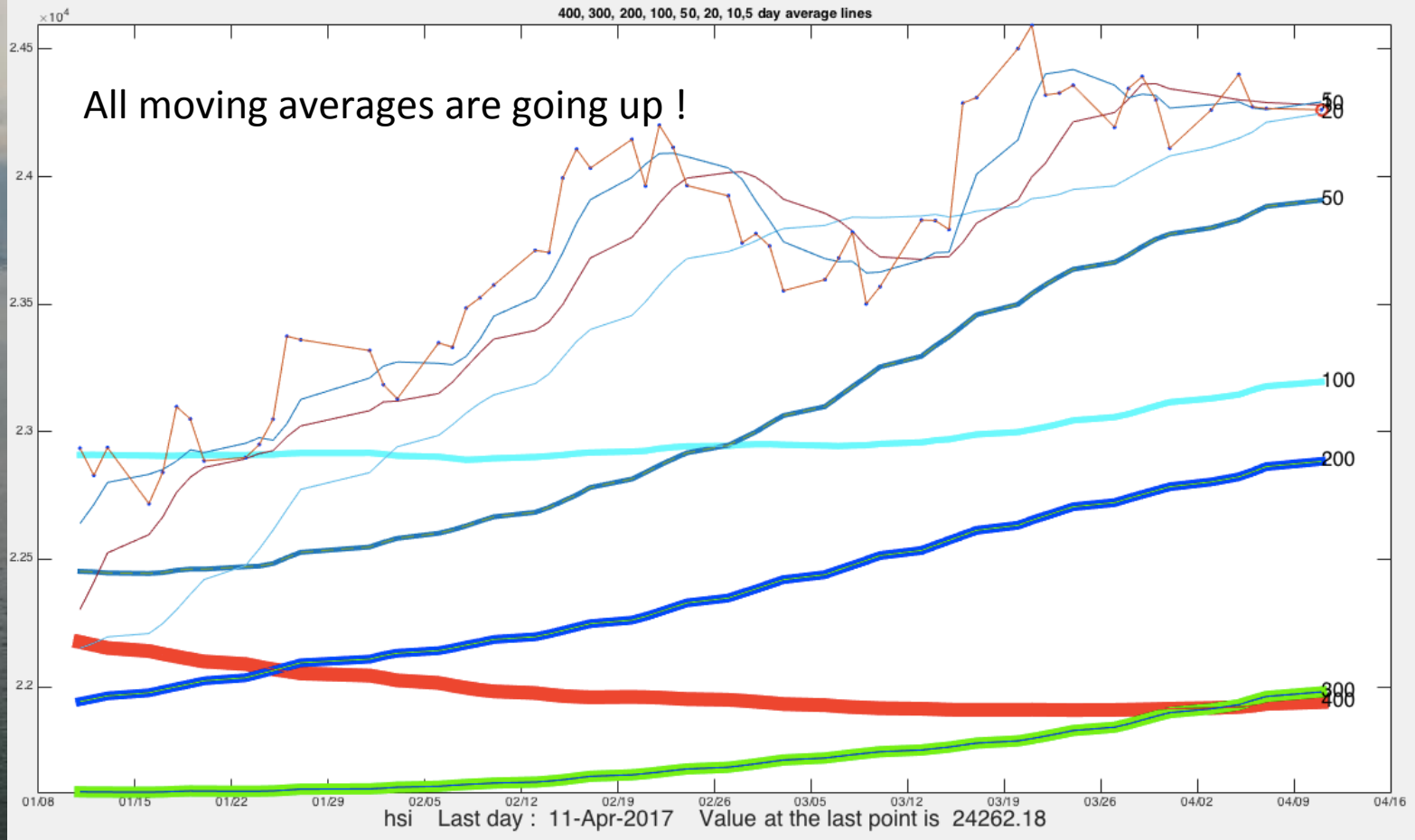


I noticed in the past few days that KDJ is an important indicator, the 2 rough lines are the derivatives of the smooth line. If the two derivative curves are above the smooth line (thus the smooth line is going up), it is most likely the stock will go up.



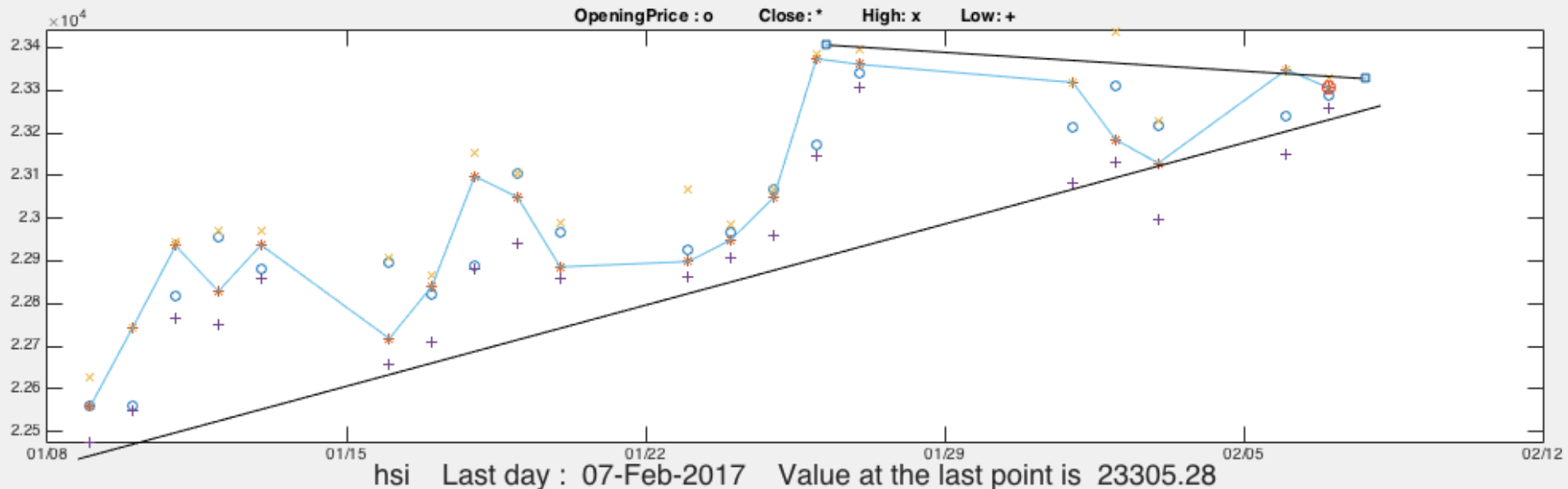
2017.4.11 Hong Kong Index to Rise

HSI from 2017.01.08 to 2017.04.10



2017.2.7 Hong Kong Index to Rise

HSI from 2017.01.08 to 2017.02.07



The world markets have been rising , and may keep going up again. However, most of the markets have risen a lot since 2016.11.07 when Trump was elected. If the market corrects in the near future, I must close all positions.

**I am about to long HSI index at current value with a small stake.
If it does not go up but go down and breaks 23100, then I shall exit.**